

AJB compositedoors



Perfection is key



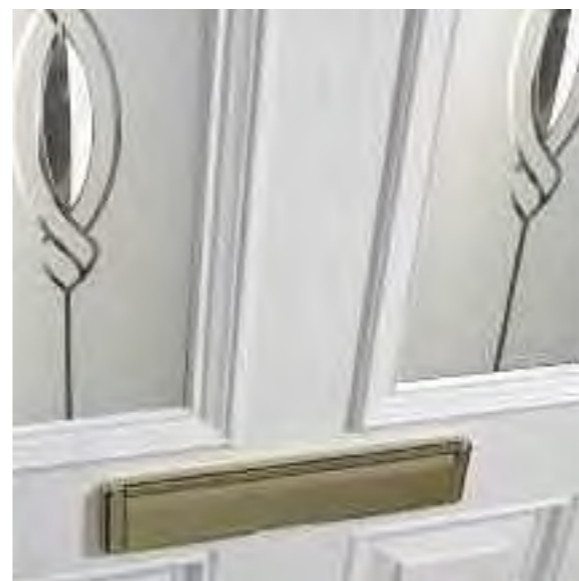
AJB group specialise in the design and manufacture of high quality solid timber external doorsets, windows and internal joinery, for over a decade we have provided a high calibre service for residential and commercial renovation and new build developments.

From our central base in the UK, our talented workforce breathe life into our exclusive product range. At all times, we strive to ensure natural materials meet modern methods of construction with advanced technology to create product excellence. In our view, this is why 'perfection is key'.

Extensive development and innovative techniques has been our footprint for quality. For today's industry requirements, we have designed a product range that does not only satisfy but also exceeds all expectations.



## Accreditations



## Content

- P3** Composite Door Overview & Features
- P5** Metropolitan Range
- P7** Presidential Range
- P9** Fireshield Range
- P11** Glazing/Glass Options
- P12** Security & Locks
- P13** Ironmongery & Furniture
- P15** Frames
- P17** Threshold Options
- P18** Technical Information & Guarantees

## AJB Composite Doors

Part of AJB group, AJB composite doors specialise in the manufacture of high quality composite doors for residential, commercial, social and new build properties.

As a company, we are committed to finding tailor made solutions for our customers, addressing your needs and taking care of all the components until the job is completed. From quoting through to supply and fitting, we offer customers a full service, managing the entire process on your behalf. Our heritage as a timber manufacturer helps us to produce doors that not only look as good as timber but need very little care and virtually no maintenance.

We offer three distinct collections – Metropolitan, Presidential and the Fireshield range, so whatever the style of your property, we can provide a doorset to complement the look.



## Metropolitan Range

Our most popular collection of residential composite doors, comprising of 18 different styles.

Being highly accredited and boasting the best in durability with the benefits of long life, strength, high security, low maintenance and superb insulation.

This range is perfect for both refurbishment and new-build housing projects.

## Presidential Range

The Presidential range is the perfect complement to the Metropolitan, bringing modern performance standards to the exquisite appearance of traditional tongue and groove panelling.

A beautiful woodgrain finish and a contemporary style means the Presidential range is ideal for inner-city flats, mews houses or studios. This range also provides all the exceptional performance and security benefits that are synonymous with AJB composite doors as well as durability and strength.

## Environmental Design

Benefits of low heat loss mean that dwellings fitted with AJB composite doors waste far less energy.

As almost 30% of CO2 emissions are from buildings, environmentally sound doors such as the Metropolitan and Presidential ranges can play a huge role in reducing the overall carbon footprint of a dwelling.

## Features

- 1. Insulating Core - *for warmth and strength***  
High-density, thermally efficient core for superb thermal performance and structural integrity
- 2. Multi-point locks - *to beat the burglar***  
Anti-bump, anti-pick, anti-drill and anti-snap locks for peace of mind
- 3. Secured by Design - *a guarantee of security***  
Secured by Design indicates a police preferred product one that has been stringently tested for structural integrity in a controlled environment
- 4. Toughened and Laminated glass - *for strength and safety***  
Toughened and Laminated glass is standard to meet the exact requirements of BS6262
- 5. Through colour GRP skin - *a protection against scratching***  
Through colour GRP skins combine the timeless look and feel of timber with exceptional durability and weather resistance
- 6. Moisture resistant sub-frame - *for weather resistance***  
Moisture resistant composite PVC-U bonded to hardwood sub-frame ensuring no moisture migration, bowing, warping or twisting
- 7. 10 year guarantee - *peace of mind as standard***  
All of our Composite doors are supplied with this guarantee.

## Energy Rating

For further information about the energy rating of your particular doorset please speak to a sales representative.



## Key Standards & Accreditations

PAS 24:2007 + A2:2011 and PAS 23-1:1999 Enhanced Security and General Performance test standards:

- Tested at a UKAS accredited test centre
- Secured by Design  
– Police preferred specification
- BM Trada Q-Mark  
– Independent Certification of test standards
- Full Building Regulations compliance including parts M, L, B and E
- State of the art insulation ensures maximum energy efficiency and protection from heat loss
- 10 year guarantee



# Metropolitan Range

All doors are provided with white internal skins, as standard, although Golden Oak and Rosewood doors are available stained on both sides.

## Colour Range



Aldgate  
- Green



Angel  
- Blue



Barnet  
- Black



Bromley  
- Rosewood



Canning  
- White



Chelsea  
- Golden Oak



Enfield  
- Rosewood



Euston  
- Red



Farringdon  
- Black



Islington  
- Blue



Kensington  
- Rosewood



Mayfair  
- Red



Paddington  
- Blue



Richmond  
- Golden Oak



Southwark  
- Green



Stockwell  
- Black



Victoria  
- Golden Oak



Westminster  
- White

# Presidential Range

All doors are provided with white internal skins, as standard, although Golden Oak and Rosewood doors are available stained on both sides.

## Colour Range



Carter - Red



Ford - Black



Harding - Rosewood



Hoover - Golden Oak



Johnson - Blue



Kennedy - Rosewood



McKinley - Rosewood



Nixon - Golden Oak



Reagan - Blue



Roosevelt - Red



Truman - White

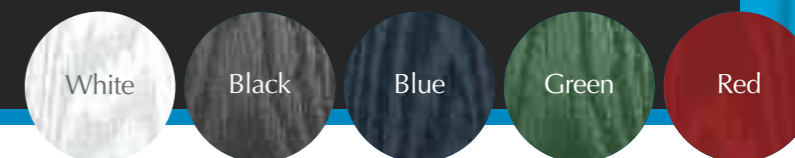


Wilson - Green

# Fireshield Doors

All doors are provided with white internal skins, as standard, with standard colour options.

## Colour Range



AJB composite doors also offer a range of bespoke fire resistant entrance doorsets. Combining unique through-colour facings with a stable, rigid and highly durable core, our fire doors offer rigorous performance and unrivalled integrity.

We supply either a 30 minute or 60 minute fire rated choice. Both are ideally suited for use in multi-occupancy buildings as entrance doors to flats and for use in stairwells and shared access hallways.

### Benefits

- FD30 or FD60 rated to Building Regulations
- Fire tested to BS476 part 22
- Smoke tested to BS476 part 31.1

### Locks & Hardware

- Approved and preferred manufacturer of Winkhaus composite hardware and EcoFrame
- Fire doors can be fitted with a range of hardware specifications and upgrades to meet client and resident needs

### Door & Frame Construction

- Glass Reinforced Polyester (GRP) outer facing wood grain surface finish door
- Manufactured from Thermoset GRP (Glass Reinforced Polyester), the doors are compression moulded to give a high-definition panel design with the characteristics of timber. The stiles and rails are hardwood laminates of mixed species which are bonded to the skin and filled with a fire-retardant phenolic foam.
- FD30 options available in Timber, Ecoframe outer frames.
- FD60 options only available in timber outer frame
- Part M compliant aluminium low threshold
- True woodgrain surface finish

### Glazing

- Fire-rated double-glazed unit as standards
- Fire tested to BS6206 and Argon filled double-glazed unit as standard

### Key Standards & Accreditations

- Secured by Design
- BM Trada Q-Mark – Independent Certification of test standards
- Full Building Regulations compliance including parts M, L, B and E
- 10 year guarantee



Angel (FD30)  
- Blue



Chelsea (FD30)  
- Green



Chelsea (FD60)  
- White



Kensington (FD30)  
- Black



Mayfair (FD30)  
- Red



Paddington (FD30)  
- Blue

# Glazing/Glass Options

More glass options available upon request.

To enhance the appearance of your GRP Composite Door, we are offering five ranges of high quality glass that conforms to the stringent UK and European regulations for glass supply to domestic housing.

This standard is BS EN 12150 and specifies the tolerances, flatness, edgework, fragmentation, and physical and mechanical characteristics of monolithic flat thermally toughened soda lime silicate safety glass for use in buildings. In short, this standard ensures that the glass used in our units conforms to the tolerances specified for safety, acoustic and thermal properties.

## Scotia

A stylish and balanced design with brilliant-cut bevels and classic textured glass pieces, hand-crafted into brass or zinc caming for clear, and in zinc caming only for coloured units.



## Kara

Offering a contemporary feel to an exquisitely designed and traditionally made glass and hand soldered caming centre pane, these glass units have the benefit of triple glazing preventing the built up of dust on the glass bevels or oxidisation or discolouring of the lead caming.



## Flores

Reminiscent of the Art Deco period, Flores has all the benefits of 21st century glass technology. The hand crafted centre pane of sparkling bevels, intricate glass pieces and caming is encapsulated in an easy to clean triple glazed unit that protects the bevels, glass pieces and caming from dust and dirt as well as oxidisation or discolouration of the caming.

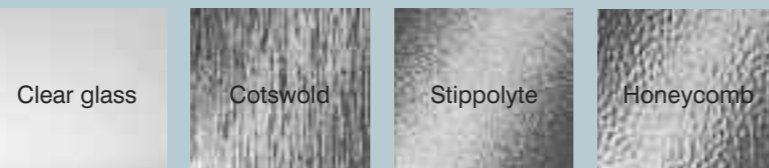


## Andaman

Exclusively designed, the Andaman range is a family of elegant designs constructed in triple glazed decorative units using hand cut bevels and beautifully textured glass pieces which are then assembled, using traditional stained glass methods, into brass or zinc caming.



## Standard Clear & Obscure Glass



# Security & Locks

## Security & Locks

Protecting your property is as important to us as it is to you so we only use the best when choosing the right locking system to protect any property. With an ever evolving industry and strict guidelines we have a range of locking systems that exceeds all expectations in crime prevention.

## Benefits

- **25mm throw tensile steel hooks**  
High security nickel plated steel hooks fully penetrate the keep rail and help prevent forcing apart of the sash and frame.
- **Weather seal compression adjustment in the keeps**  
Together with the enhanced tapered handed hook design the adjustment in the keeps provides for low operating forces. With  $\pm 2$ mm adjustment it is possible to adjust for misalignment of the door during and after installation.
- **Heavy duty steel keeps**  
Depending on door frame material, 20mm – 24mm wide heavy duty steel keeps are manufactured using high grade steel, plated to comply with the highest Grade 4 corrosion resistance requirement of BS EN1670 European Standard.
- **Latch and deadbolt**  
Engineered alloy sprung latch (or steel latch for Fire Doors) with a nickel plated steel deadbolt.
- **High performance gearbox**  
Tested to 100,000 cycles the sprung gearbox offers the lowest possible operating forces and helps prevent handle 'droop'.
- **Cylinders and handles**  
Anti-Bump, Anti-Pick, Anti-Snap & Anti-Drill designed cylinders to excel PAS23/24 security and durability standards, both for single domestic dwellings and multi-occupancy dwellings where master key systems are required. All locking systems are compatible with industry standard handles.



Deadbolt and gearbox



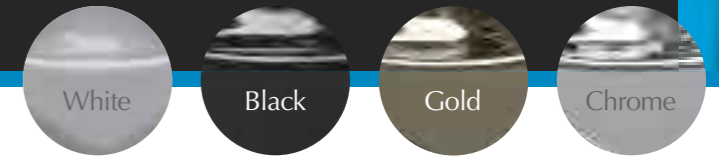
Hookbolt

Cylinder & Guard TS007 3 Star solution

# Ironmongery/Furniture

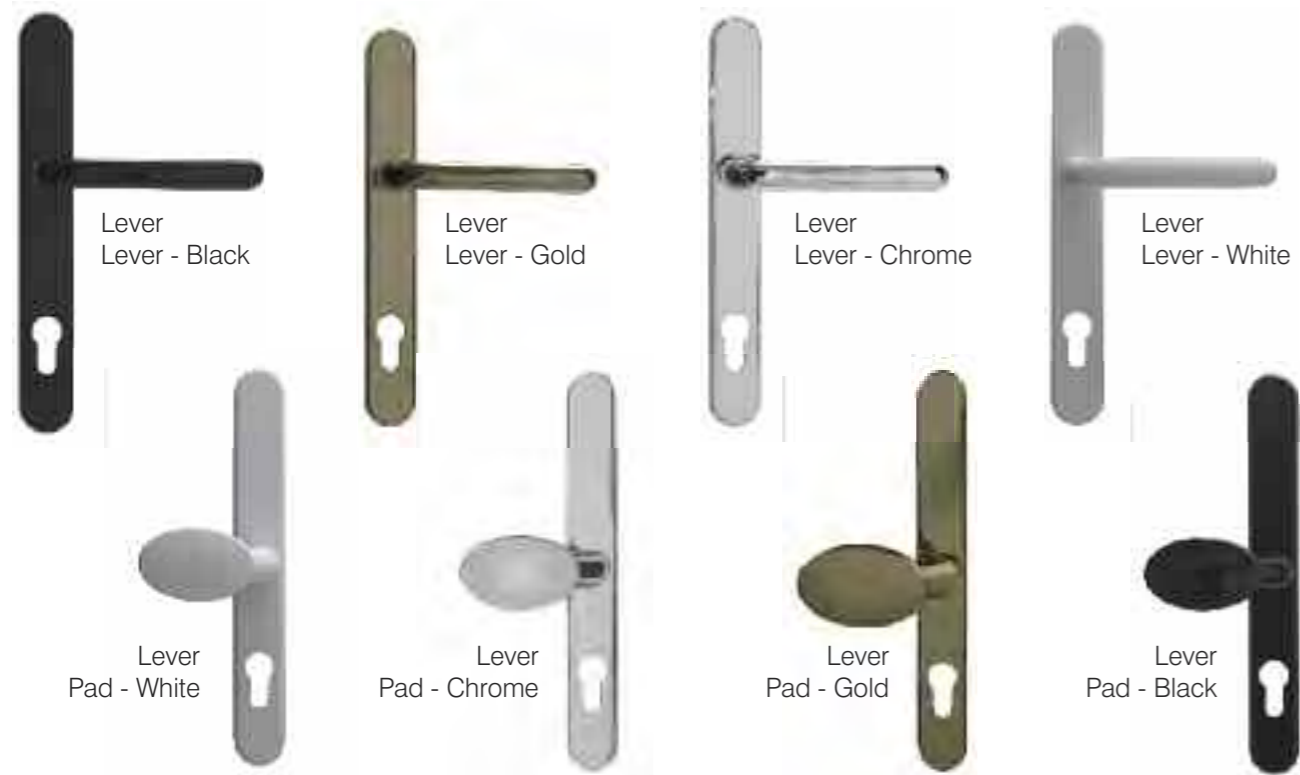
More options are available on request, please speak to a sales representative for further information. All ironmongery is subject to change without notice.

Colour Range



Add the finishing touch to your doorset with our range of ironmongery and furniture. From traditional knockers and door handles to letterboxes and numerals, our ironmongery furniture offers the perfect complement to your doorset to achieve the desired look.

## Door Handles



Please note; The Lever/Pad handle restricts opening the door from the outside

## Letter Plates



## Door Knockers



## Numerals





# Frame Options

At AJB composite doors we strongly believe in protecting our environment and by doing so we are always looking into alternative materials and methods of manufacture to ensure our company environmental policies are adhered to. With this in mind and extensive research, we are able to offer three different outer frame material types to suit your requirements.

## Certified Timber (FSC/PEFC)



When it comes to protecting our resources we ensure that the material used for our timber outer frames is sustainability sourced in accordance with FSC/ PEFC regulations. FSC and PEFC are both global forestry certification systems to ensure that a forest is well managed and is not contributing to deforestation.

Legally obtained and responsible timber sourcing allows our customers to claim 3 BREEAM points per element under The Code for Sustainable Homes technical guide helping you to achieve that level 6 build. This incentive brings direct benefits to the forest, such as protecting biodiversity, indigenous peoples' rights, worker's rights, and areas of significant environmental or cultural importance.

Our timber frames are finished to the highest standards by using the most advanced techniques and are finished in a standard RAL9016 white, we also offer a wide range of RAL opaque and translucent colours which are all applied within our manufacturing plant. By using timber we are able to manufacture any combination of side and toplight screens with ease allowing us greater flexibility to attend to our customer needs.

The waste created from manufacturing timber products by AJB group is recycled with our on-site wood combustion biomass system which contributes zero tonnes of waste to landfill and making the timber frame option extremely environmentally friendly.

## Technical Performance;

- FD30 & FD60 fire rated compliant
- PAS 23 & 24 weather and security compliant
- Secured by design
- Specifically designed for 44mm & 70mm thick composite doors
- 60mm sight line provides a pleasing visual appearance
- Compatible with aluminium low threshold systems
- Compatible with Part M of the building regulations for wheel chair access
- Factory finished in RAL opaque and translucent colours guaranteed up to 10 years
- Incorporates Aquamac 21 sheathed form weather seal for high weather performance
- Dual intumescent seal protection to aid fire resistance
- Very low thermal conductivity
- 10 year guarantee



## EcoFrame™ (Recycled Composite Material)



Ecoframe™ is a solid material sheathed in white powder coated, outer aluminium skins. It is made from recycled plastic shopping bags, bottles and aluminium drinks cans and has been used as a material for windows and doors for many years in Europe. Developed in Germany Winkhaus have designed a 70mm outer frame ideal for 44mm timber and Composite door slabs, additionally it is also environmentally friendly and infinitely recyclable as well!

Following extensive market research it has been established that a viable alternative to PVCu outer frames was required that could not only reduce material and labour costs but that was also a product that could be infinitely recycled in accordance with the EU landfill directive.

Part M and Low thresholds have not been forgotten. Completely compatible with leading brand low threshold systems, Ecoframe™ can be directly fixed from the underside of the aluminium threshold with standard screws, as unlike hollow PVCu sections Ecoframe™ is a solid material.

## Technical Performance;

- FD30 fire rated compliant
- Specifically designed for 44mm wide composite doors
- 60mm sight line provides a pleasing visual appearance
- Compatible with aluminium low threshold systems
- Compatible with Part M of the building regulations for wheel chair access
- Aluminium white painted RAL 9016 skin guaranteed
- Patented design
- Extremely resilient to impact, kicking, gouging and burglary attacks
- Aquamac 21 sheathed form weather seal for high weather performance
- Dual intumescent seal protection to aid fire resistance
- Very low thermal conductivity
- UV stable
- 10 year guarantee
- Certified 100% Non-toxic material
- Certified 100% Non-toxic gases when burning
- Tested in Doorsets to comply with PAS23/24 security standards

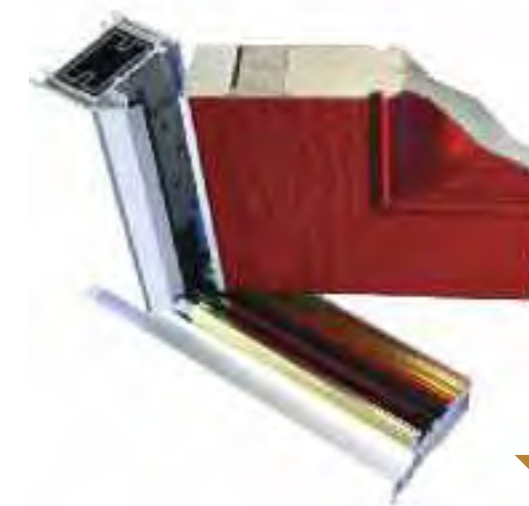
## Profile 22 (100% Recycled PVCu)



Made from 100% waste material, Profile 22 is the most environmentally friendly plastic outer frame available and is the first PVCu system to be awarded the Building Research Establishment (BRE) A+ rating.

Sustainability has become one of the biggest challenges facing the construction industry, with ever-evolving requirements to meet carbon reduction targets. We are dedicated to developing and supplying low carbon products to ensure we improve the environmental performance of a project whilst reducing our client's carbon footprint.

To help you comply with the demanding targets for sustainability we are able to offer a range of innovative components using a high level of recycled PVCu. This facilitates the fabrication of significantly lower carbon and more energy-efficient doorsets.



## Technical Performance;

- PAS 23 & 24 weather and security compliant
- Secured by designed
- Specifically designed for 44mm thick composite doors
- 60mm sight line provides a pleasing visual appearance
- Compatible with aluminium low threshold systems
- Compatible with Part M of the building regulations for wheel chair access
- Incorporates weather seal for high weather performance
- 10 year guarantee

## Low-level Threshold

All of our standard composite doors are supplied with a wheelchair accessible Part M complaint low-level aluminium threshold. This type of threshold is suitable for moderate weather exposure and can be easily removed for remedial work. A similar type of low-level threshold is also used for Fire rated doors. Options available for thermal break requirements.

Manufactured in accordance with;

- BS1474 – Aluminium hardened high tensile,
- BS3987 – Anodising,
- BS6496 – Power coating.

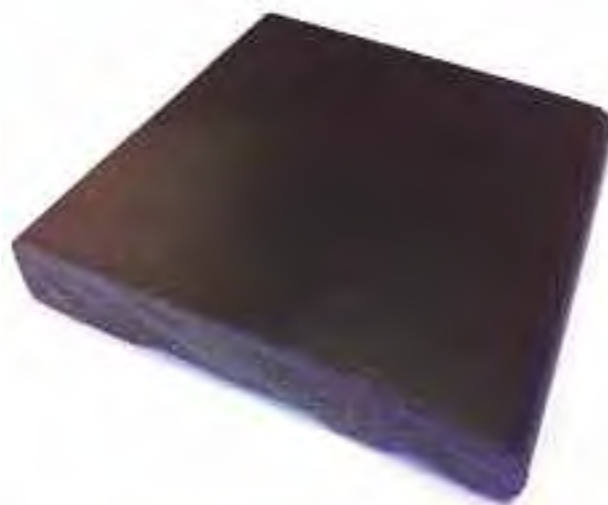


## Composite Sill

Extensive research has gone into sourcing the very best materials ensuring we supply the superior sill products in the market place. By doing so, we are one of a very few manufacturers who are able to offer its customers an eco-friendly Composite Sill. Our sill is extremely durable in all weather conditions and is extruded from foamed polystyrene, a unique synthetic wood product that has all the qualities of wood and none of its disadvantages such as rot.

Manufactured in accordance with;

- ISO527 – Determination of tensile properties,
- BS476 – Fire tests on building materials and structures,
- BS373 – Methods of testing small clear specimens of timber.



Your new insulated composite door is strong, durable and secure, and manufactured to a high quality specification. Its strength comes from the construction of its sub-frame in solid, water-resistant polymer material, reinforced behind with Laminated Veneered Lumber (LVL). The thermoset GRP skins are then bonded to this sub frame, and its core filled with high density, 100% CFC-free polyurethane foam.

The thermoset GRP skins are depression moulded featuring a lifelike grain effect and high definition panels providing an authentic timber like door with all the advantages of wood but with little maintenance. Thermoset GRP cannot expand or contract laterally so that the door cannot increase or decrease in size, an advantage over other commonly used materials.

The factory finish colours of White, Black, Blue, Green and Red have pre-pigmented GRP skins which are over-sprayed with a UV stable paint.

The doors' insulation properties are excellent in both sound reduction and heat retention. In the case of sound this is particularly helpful in reducing traffic noise, with its high level of thermal insulation, our doors outperform both timber and PVC-u doors. This insulation contributes to the general energy efficiency of your home and savings to your bills.

This insulated composite door is environmentally friendly as it rates low in both Global Warming Potential and Ozone Depletion.

This is a door that's well insulated, made to last, looks good, protects your home from both intruders and the elements and will serve you well for many years to come.

## Technical Information

- 44.5mm thick door with 5 pre-pigmented colours and 2 wood stains
- Thermoset GRP skins are impact resistant, will not expand, contract or crack
- Proven to PAS 24 and Secured by Design (SBD), the official UK Police initiative supporting 'designing out crime'
- Excellent thermal performance, with an average door leaf centre pane U-value of 0.6W/mtr2/K
- Sound Transmission Class (STC); 29db
- Doorsets conform to UK Building Regulation minimum U value requirements of 1.6W/mtr2/K
- Door leaf manufactured to the UK Q-marked quality scheme
- Global Warming Potential (GWP) score of less than 5
- Ozone Depletion Potential (ODP) score 0

## Customer care and maintenance of your insulated composite door

To prolong the life of the surface finish and protect your warranty, it is recommended that your door is regularly cleaned by washing with warm soapy water (washing up liquid is suitable), using a soft lint free cloth. Cleaning may need to be more frequent if your location is coastal, heavily industrialised or near a main road.

### Important – do not:


- Use abrasive cleaners or scouring pads on the surface of the door
- Use high pressure or steam cleaners
- Use any type of bleach, solvent (eg white spirit, methylated spirit, cellulose thinners or acetone/nail varnish remove)
- Use adhesives of any type or tack for providing temporary protection or fixing of seasonal or other decorations etc





 internal joinery

 external joinery

 compositedoors

 mouldings

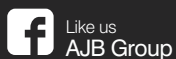


AJB group

49 Kenilworth Drive, Oadby, Leicester LE2 5LT

t: (0116) 271 9110 f: (0116) 271 9098 e: enquiries@ajb-compositedoors.co.uk

[www.ajb-compositedoors.co.uk](http://www.ajb-compositedoors.co.uk)



Like us  
AJB Group



Follow us  
AJB\_Group

Door and glass colours shown in this brochure should be used for guidance only as the limitations in photographic and printing processes may mean that colours of products vary from those illustrated. All information in this publication is provided for guidance only and AJB Composite Doors Ltd reserve the right to alter specification without prior notice. Reproduction of this brochure in whole or part is strictly forbidden without prior written consent. Copyright (C) AJB Composite Doors Ltd 2013